



Student Castle Residence



Modern studios in the heart of Cambridge with excellent amenities

Comfort, convenience and community: Experience modern student living with EC

Living in Cambridge offers a special mix of academic prestige and lively city life. Cambridge is famous for its university and landmarks, so studying here is an inspiring experience. Student Castle Residence is only a 20-minute walk from school, and it's very close to the River Cam and Jesus Green, giving you the opportunity to relax with riverside walks or outdoor activities in one of the city's most beautiful parks.

Your neighbourhood

This contemporary student residence is located just a short cycle to Trinity College, Jesus Green (4-minute walk), the River Cam, as well as the neighbourhood's cafe and boutique shops. There are frequent buses to the city centre and it's just a 12-minute journey to the school.

Your Accommodation

Student Castle Cambridge consists of 6 distinct blocks (Blocks A-F), each containing 4 floors of student accommodation (Ground Floor – 3rd Floor). The studios are all modern, self-contained studios (including a private shower and toilet) with plenty of storage.

Room type

Studio with private bathroom

Bathroom

En-suite shower

Board status

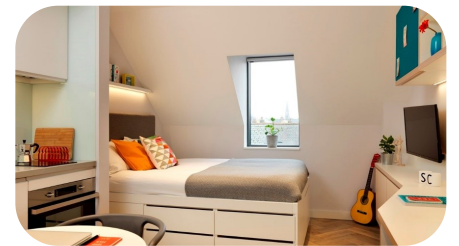
Self-catering

Available

Year-round

Arrival and departure

Saturday to Saturday



Key Features

- Heating
- Gym
- Sky Lounge
- Netflix
- Lift
- Bicycle Storage
- Cinema & Games Room
- Vending Machine
- Laundry Room

Room Options

The residence consists of studio rooms with a private bathroom with a kitchenette. The room is 22 sq.m.

Kitchenette facilities: Fridge, oven and 2 hobs, 1 medium pot, 1 large pot, 1 frying pan, 1 bowl, 1 small plate, 1 large plate, 1 cutlery set, 1 mug, 1 kettle, 1 glass, 1 potato masher, 2 ladles, 2 spatulas, 2 chopping knives, 1 tin opener.

Facilities

Communal Lounge with Sky TV, Netflix, table football, study area, fitness centre, games room, lift, multimedia room, vending machines available, wheelchair accessible, bicycle storage, outdoor courtyard.

Room Furnishings

Each room is equipped with a wardrobe, study desk and chair, a double bed, kitchenette and breakfast bar, and TV.

Laundry

Laundry facilities, Bed Linen and Towels provided.

Cleaning services available.

Arrival procedures

Please send flight details or an estimated arrival time once you know it.

Airport pickup

If you have booked accommodation with EC you must arrive at the airport between 08:00 and 20:00. Late/early arrivals may be asked to book alternative accommodation

Please provide your flight number, arrival time, terminal and airport of origin – minimum 2 weeks in advance

You will meet an EC transportation representative holding sign with the EC logo and your name. They will be waiting for you at Arrivals.

If after 10 minutes you cannot see the EC representative, just call +44 (0)7342037743 (from the information desk or a mobile phone). (Useful phrase to use: Hi, My name is (Maria Angeli). I am from (Italy). My student number is (123456). I cannot find my EC representative. I am at the information desk.)

Arrival and Departure

Arrival day: Saturday (Sunday arrival is possible on request).

Check-in: 3 pm

No security deposit is needed. Early check-in is not allowed.

Late check-in is allowed. Inform EC Cambridge the Tuesday before arrival

Departure day: Saturday

Check-out: 10:00 am.

Late check-out is not possible

Address

Student Castle Residence,
1 Milton Rd, Cambridge CB4 1UY
United Kingdom

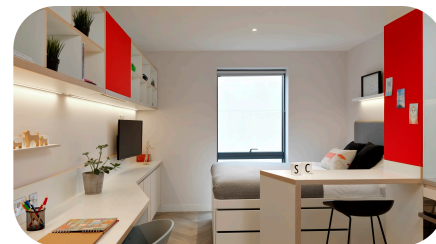
Phone number: [+44 \(0\)7342037743](tel:+44(0)7342037743)

Journey to school

On foot: 19 minutes

By public transport: 14 minutes

By bicycle: 7 minutes



House Rules

- Students must be 18 + to choose this residence.
- Mixed Gender: Male and female students share common areas and facilities, but bedrooms are single gender.
- Overnight guests and visitors are allowed and can stay for a maximum of 3 nights every 4 weeks.
- Smoking is only permitted in the designated smoking area.
- Students arriving in EC accommodation between 22.00 and 08.00 may be asked to book alternative accommodation for their first night. This is to ensure the students' safety on arrival.
- While we promote and support diversity, we cannot guarantee a language mix. However, we always encourage students to use English to communicate and be respectful and inclusive of others.

Resident belongings

- EC provides a clean living space for all students and expects a basic level of respect from all students. For example, if something is dropped, pick it up; do not leave clothes and belongings on the floor; place rubbish and leftovers in a garbage bag.
- **Students are required** to follow [EC Student Code of Conduct](#), failure to do so can result in termination of the accommodation.

For more accommodation terms and conditions please refer to [EC accommodation policy](#).

Cancellations

Cancellation prior to arrival

Students cancelling or postponing within 14 days of arrival date, for reasons other than visa denial, will be charged a one-week accommodation fee at the standard accommodation rate and the accommodation placement fee.

Cancellation after arrival

Students leaving their accommodation must give notice in writing 4 weeks prior to termination. After deducting the price of accommodation used, including the required notice period, charged at standard accommodation rates, students will be refunded the remaining accommodation costs. If the 4-week notice period is not provided a cancellation fee equal to 4 weeks of the accommodation cost will apply.

[Terms & Conditions](#)

