



Campus Hub Residence



Enjoy a Malta accommodation in a vibrant University neighbourhood

Comfort, convenience and community: Experience modern student living with EC

Immerse yourself in Malta's university neighbourhood at our Campus Hub Residence, where convenience meets community. Located near the University of Malta, you will find everything you need nearby—student-friendly shops, cafes, affordable restaurants, and easy access to public transport that connects you to iconic spots like Valletta and Sliema. Whether you are hitting the books or exploring Malta's rich culture, The Campus Hub Residence puts you right where you need to be.

Designed with students in mind, our modern residences offer a choice of single or twin rooms with free Wi-Fi, communal cooking and dining spaces, a cosy living area with smart TV, and an outdoor pool for relaxing after class. With added amenities like a gym, onsite laundry and cleaning services, The Campus Hub Residence is the perfect place to start your Malta adventure.

Your neighbourhood

The Campus Hub Residence is centrally located right near the University of Malta, a student-friendly area with easy access to public transport to all Malta locations, like Valletta and Sliema. A supermarket and pharmacy are within easy walking distance, and the area is brimming with student-oriented shops, cafes, fast food options and affordable restaurants—a good choice for students looking for a convenient and lively environment that provides a balance between studying and social life.

Your Accommodation

These newly built residences are designed and styled perfectly for a student's lifestyle. You can choose a fully furnished single or twin room with a shared bathroom or private bathroom option. The building also offers a variety of communal spaces, including a kitchen with ample cooking and dining space, plus a living area with comfortable seating and a smart TV. You also have free use of an onsite outdoor pool. With gym facilities (against fee), onsite laundry, free Wi-Fi and cleaning services, the Campus Hub Residence is a great choice for any student.

Room type

Single bedroom; twin bedroom

Bathroom

Shared/Private
Shared bathroom ratio: up to 6 students max
Private bathroom available with extra supplement

Board status

Self-catering

Available

Year-round

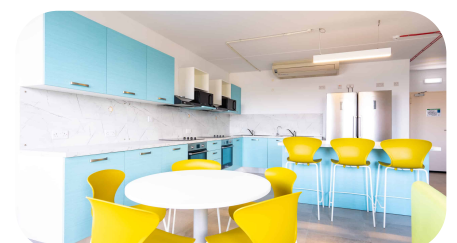
Arrival and departure

Saturday/Saturday



Key Features

Air conditioning
Gym
Cafes
24/7 security & CCTV
games room
Study area
Laundry



Room Options

Single bedroom or twin bedroom (room sizes vary) with shared bath (6 students max) or private bathroom at an extra supplement.

Room Furnishings

Single bed, nightstand, closet or armoire, bed linens and utilities included.

Bed linen, one (1) bath towel and one (1) bathmat are provided. However, students should bring their own beach towels.

A hairdryer is available at school's reception for a refundable deposit.

Laundry and Cleaning

Cleaning Service is provided free of charge once a week. Tidying up and refreshing rooms, bathrooms and common areas. Towels and linen also changed weekly. For daily upkeep of the apartment, students must buy their own cleaning material. Toiletries and personal hygiene products must be purchased by the student.

Laundry – On-site laundry room at level -3 in with washing and drying machines 6KG wash is €8, 11KG wash is €13, 6KG Dryer is €6 per hour, 11KG Dryer is €12 per hour. The laundry rooms are open 24 hours a day. Detergent and softener are automatically dispensed and included in the price of the wash.

Common Areas

Communal dining room, communal kitchen, gym, laundry facilities, Wi-Fi, outdoor pool and cleaning service.

Miscellaneous

Kitchen utensils are provided free of charge (Cutlery, crockery, pots and pans). No deposit needed

Ecotax Contribution: Payable upon check-in at the Campus Hub reception, this eco-friendly tax has a fixed cap of 5 euros for the entire stay.

A refundable deposit is required upon check-in to cover potential damages. For 1-week bookings, the deposit is 50 euros; for 1-month bookings, it's 100 euros; for 2-month bookings, it's 200 euros. Bookings for 3 or more months require a deposit of 350 euros. Refundable damage deposits must be made by bank transfer or credit card. Please note that cash payments will not be accepted.

Arrival procedures

Upon arrival and luggage pick-up, you will enter the Malta Airport Arrival area, where you should look for your taxi driver who will be holding a white paper with a big orange EC logo. The driver will ask you for your name and surname. The drivers will always try to be on time, however, if for reasons beyond their control, a delay occurs, please, wait for 10 mins before you call the EC Emergency number on +356 99467078. Please note that our cars have space for 1 cabin luggage and 1 large suitcase per person. You will then be taken to your accommodation. If you arrive before 2pm please contact the school for further details. Please note that EC does not accept any liability for your belongings.

Airport pickup

Arrival transfer is included free of charge when booking course and accommodation with EC.

Arrival and Departure

Arrival day: Saturday/Sunday

Check-in: 2 pm

Early check-in is not allowed

Late check-in is allowed

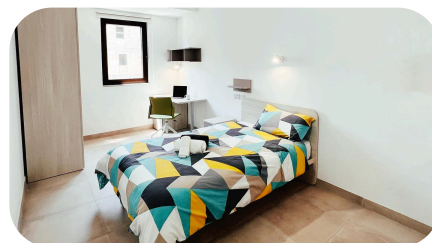
Departure day: Saturday/Sunday

Check-out: 10:00 am.

You are permitted to leave your luggage in the common area of the apartment until you are leaving to go to the airport.

Please remember to leave your apartment and bedroom key as indicated, otherwise, lost key charges may apply.

Late check-out is not available.



Address

The Campus Hub Residence
University of Malta
Msida, MSD 2080

Phone number: [+356 2379 0555](tel:+35623790555)
(during office hours: 9am to 5pm)

Journey to school

By bus (approximately 30 minutes) or
on foot (approximately 45 minutes)



House Rules

- Students must be 18+ to choose this accommodation
- All apartments are mixed gender apartments (single gender in twin rooms)
- Deposit - A refundable deposit on check-in to cover for any potential Damage deposits will be charged as follows: Students spending up to one month will be asked to leave a deposit of €100. Students spending up to two months will be asked to leave a deposit of €200. Students spending up to three months or more will be asked to leave a deposit of €350. Deposits will only be refunded once an inventory check is completed and no damages/loss of items/thefts etc are noted. Deposits will also be non-refundable if one of the T&C are broken. Refundable damage deposits can be made by bank transfer or credit card only.
- Every resident must sign a Shared Apartment Agreement before they can receive the key to the apartment or as otherwise instructed. The Agreement informs the residents that they are responsible for any damages, no guests, no smoking inside the apartments etc. The document is available on request before confirmation of booking.
- Guests are not permitted without written permission from the Accommodation Office.
- Smoking is not permitted in any part of the apartment
- Garbage and recycling collection times must be followed, or local council fines apply. This info is displayed in each apartment
- While we promote and support diversity, we cannot guarantee language mix. However, we always encourage students to use English to communicate, be respectful and inclusive of others
- EC provides a clean living space for all students and expects a basic level of respect from all students. For example, if something is dropped, pick it up; do not leave clothes and belongings on the floor; place rubbish and leftovers in a garbage bag
- **Students are required** to follow [EC Student Code of Conduct](#), failure to do so can result in termination of the accommodation.

For more accommodation terms and conditions please refer to [EC accommodation policy](#).

Cancellations

Cancellation prior to arrival

Students cancelling or postponing 14 days or less prior to their accommodation dates will be charged a two-week accommodation fee at the rate quoted in the price list for the accommodation booked and the accommodation placement fee.

Cancellation after arrival

Students leaving their accommodation must give notice in writing 4 weeks prior to termination. If the 4-week notice period is not provided a cancellation fee equal to 4 weeks of the accommodation cost will apply. After deducting the price of accommodation used at the rate quoted in the price list, including the required notice period charged at the same rate, students will be refunded the remaining accommodation costs.

