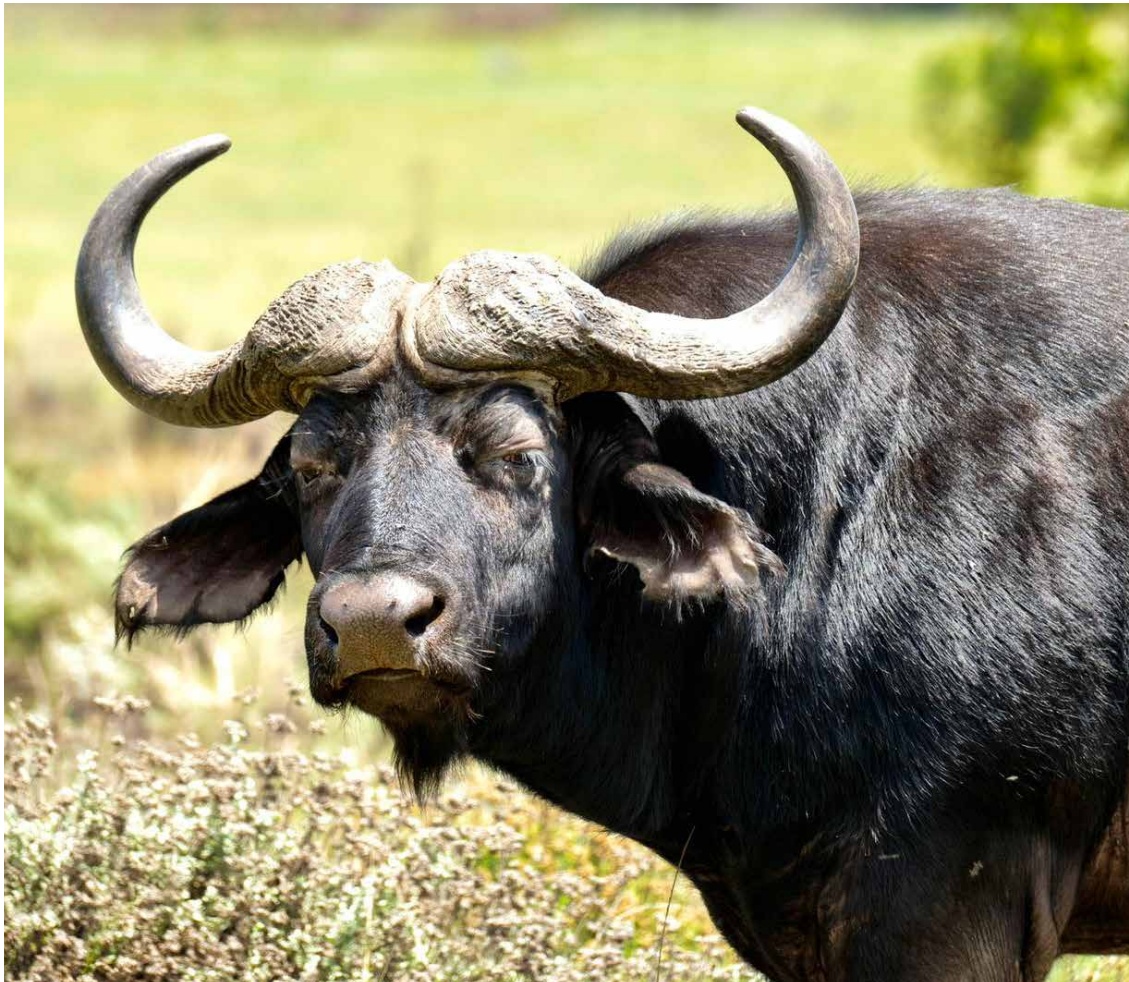


WILDLIFE RESEARCH & CONSERVATION PROGRAMME



VOLUNTEERING
FACTSHEET



ABOUT

This Wildlife project is based in the southern region of South Africa in the Cape Floristic Region, a biodiversity hotspot and the most diverse floral kingdom in the world. Research focuses on regional conservation management, behavioural ecology and human-wildlife coexistence. Visit our various pages to learn about participating in our research or contact us if interested in undertaking your own research.

The Wildlife Research and Conservation programme gives wildlife enthusiasts, volunteers, students, scientists and interns of all ages and backgrounds an opportunity to get involved in conservation, research and wildlife management. Participants spend five days per week assisting in various capacities of research and wildlife conservation. Assistance is given through field work (data collection, behaviour observations, trail camera deployment), entering and analysing data, maintaining trail cameras and analysing their photos. We leave evenings and weekends open which allows the chance to explore South Africa and take part in various cultural and tourist activities. Based in the beautiful coastal town of Hartenbos, South Africa, our participants have a unique experience of working hands on in conservation on a free roaming wildlife reserve while living within walking distance to our pristine blue flag beaches.

FIND YOUR VOICE



WHAT WILL YOU DO?

When participating in the Wildlife Research and Conservation programme; volunteers, interns and students are involved in various research and conservation initiatives and projects within the game reserve. Projects and initiatives are peer-reviewed with foundational concepts to improve the welfare and understanding of wildlife in and outside protected areas. Primary work is dedicated to field observations and duties, data management and wildlife management assistance. All participants rotate through the various initiatives at the project when participating in the Wildlife Research and Conservation Programme. This includes our research.

Current work is being done on white rhino social behaviour, hyaenic resource use in Fynbos, behavioural flexibility of bovids and wildlife fatality on roads. As a volunteer, intern or student, you will be working alongside the team to observe, collect data, develop projects and enter data. Please keep in mind that time spent on the various projects will be determined by monthly quotas, weather, and animal cooperation. Training in “bush basics” such as survival, track and sign, reading animal behaviour, and ethical approach methods will also be provided. The team takes great pride in only ethical operations and approaches, and find it important to provide the information and understanding as to why we operate in the field the way we do.

The following is a tentative schedule that we follow each week (Monday to Friday):

- 07:30** Breakfast
- 08:00** Depart for Field Work
- 09:00** Begin Data Collection or Training
- 12:30** Packed Lunch on the Reserve
- 13:15** Continue Data Collection or Training
- 16:00** Finish Field Work
- Free Time

The mantra of “**Educate Act Empower**” is nowhere more evident than in the Wildlife Research and Conservation Programme. Participants are assisting in critical hands-on research and conservation initiatives in the field that impacts the wildlife and environment in both short and long term goals and solutions.

These two areas, Educate and Act, work together to foster and facilitate the most important aspect of these ideals, to Empower. Through hands-on initiatives and education, one leaves the Wildlife project with a better understanding of the problems plaguing African wildlife, the efforts being made to assuage these issues, and how they can continue to work with conservation and make a change for the better of wildlife, ecosystems and our planet.

WHAT TO WEAR?

- Neutral Field work clothes (required)

ACCOMMODATION AND MEALS

- Our volunteers, interns, and students stay together in the pristine town of Hartenbos in self-catering apartments. Bedding is included, but towels are not.
- Maximum of 2 volunteers share a room and bathroom. Communal Kitchen.



MEALS

- Basic, cold breakfast 7 days per week (Cereals)
- Packed Lunch Monday-Friday
- Dinners and weekend lunches are not included (fully equipped self-catering kitchen available and restaurants within walking distance)

WHAT YOU NEED TO KNOW

ANIMAL

Behavioral ecology of southern white rhinoceros, *ceratotherium simum simum*, in the Cape Floristic Region

**Participants are required to provide at least two face masks that needs to be worn indoors in public areas. Field work is conducted outdoors where masks are not required. Alcohol based sanitizer is provided for field activities and equipment/vehicles are sanitized daily. Participants should provide sanitizer for personal use after hours. We ask that all volunteers, interns and students understand that our work is conducted on a free roaming reserve of 11,000ha (27181 acres) and that schedules may change based on animal locations, accessibility, weather, and other factors.

MINIMUM AGE

- 18

MINIMUM LEVEL OF ENGLISH REQUIRED

- Upper Intermediate

SKILLS/PERSONALITY TRAITS REQUIRED:

All participants must be of reasonably good health, physically and mentally. Participants will be required to work full or partial days on foot (the other days will be spent primarily in a vehicle/ stationary). During days on foot, the team hikes to access the areas needed to complete our work. Volunteers, interns and students must be able to hike up and down hills and across this terrain whilst carrying their own backpack that contains their provided lunch, drinking water, personal snacks, additional layers (weather dependent), and their share of the day's equipment such as nets, camera traps, clipboards, binoculars, reference books, etc.

APPLICATION

- Yes, we will provide our application form and code of conduct on request.

ARRIVAL

- George (GRJ Airport) - Arrival any day / Departure any day

WHICH TRANSFERS ARE INCLUDED?

- Transfer to and from George (GRJ) airport is included



WHAT TO BRING?

- Neutral Field work clothes (required)
- 3-point South African adapters (required)
- Binoculars (required)
- Notebook and pen(s)
- Face masks (required)
- Hand sanitizer (required)
- Beach towel
- Reusable shopping bags
- Day Backpack (required)
- Reusable water bottle (required)
- Personal toiletries
- Camera (optional)
- Sunscreen
- Sun hat
- Leisure wear

VACCINATIONS

- Consult your local doctor/travel clinic.

WHERE IS THE PROJECT BASED?

- Hartenbos, Western Cape South Africa



WORKING?

- 5 days per week – minimum stay of 14 Nights
- Closed: 10 December - 15 January

COSTS?

- Placement fee: **€400** (non-refundable) | Price per week: **€1020**

PROBATION?

- N/A

SICK DAYS?

- Stay in your accommodation until better.
- Just inform the project in the morning.

WHAT IS INCLUDED?

- Shared accommodation
- Basic, cold breakfast 7 days per week (Cereals)
- Packed Lunch Monday-Friday
- Conservation fees
- Daily access to game reserve
- Project related transport
- 24/7 emergency standby team
- Guided research and management activities
- All training material
- Housekeeping
- Airport Transfers (GRJ)
- Unlimited Wi-Fi
- Support services from both the project and EC Cape Town
- 24/7 assistance on EC Cape Town's emergency phone for the duration of your stay

WHAT IS EXCLUDED?

- Visa application fees
- Travel insurance (available at €20 per week if booked with EC)
- Dinners and weekend lunches (fully equipped self-catering kitchen available and restaurants within walking distance)
- Curios and other souvenirs
- Drinks
- Weekend activities
- Flights
- Laundry
- Anything not stated





TERMS AND CONDITIONS?

- Standard EC Terms and Conditions apply.
- In addition, please note the following Project Booking and Cancellation Policy:
 - I. Cancellation 60+ days before your intended arrival, will be provided a full refund minus your original non-refundable deposit of €500.
 - II. Cancellation 30 to 59 days prior to your arrival will be able to return 50% of your programme fee.
 - III. Cancellation 30 days or less before arrival does not receive a refund, as expenses have already been made for your scheduled time with us.
 - IV. Should a participant decide to leave the programme early, no compensation, monetary or otherwise, will be given.
 - V. Should a participant break the Agreement with Nkonzo Wildlife (Indemnity Form and Conduct Form), it is at the discretion of Nkonzo Wildlife to dismiss said intern from the programme with no compensation, monetary or otherwise.
 - VI. Should a participant be quarantined or denied entry on arrival, alternative dates for participation will be provided, subject to availability.
 - VII. In the event of a participant contracting Covid19 while with Nkonzo Wildlife, no refund or change in dates are permitted.

