



Brook Hall Summer residence



Comfortable Student Residence in Manchester

Comfort, convenience and community: Experience modern student living with EC

Brook Hall offers modern, fully furnished student accommodation designed for convenience and community living. Each en-suite classic room features a comfortable 3/4 bed, private bathroom, and dedicated study space. Students share a well-equipped kitchen with 3-5 others, complete with essential appliances and a communal lounge area. With great amenities and a friendly atmosphere, Brook Hall provides the perfect balance of privacy and social living.

Your neighbourhood

Brook Hall offers easy access to local amenities, with a Lidl supermarket just a 10-minute walk away for budget-friendly shopping. Manchester city centre is only 30 minutes on foot or 20 minutes by bus, offering endless entertainment. Enjoy crazy golf, cinemas, and live music at venues like the O2 Ritz and Manchester Arena. With countless shops at Manchester Arndale and a lively nightlife scene, there's always something to explore.

Room type

Single

Bathroom

Private Bathroom

Board status

Self-catering

Available

Not Available

Arrival and departure

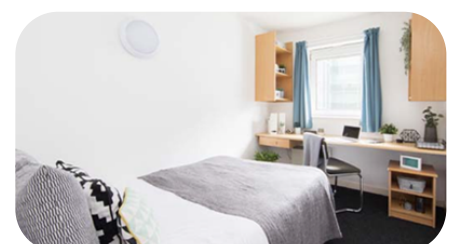
Arrival: Saturday

Departure: Sunday



Key Features

Wheelchair Accessible
Communal Kitchen
Heating
communal lounge with TV
24/7 security & CCTV
bike racks
iron&iron board
Laundry FACILITIES



Your Accommodation

Brook Hall offers modern student accommodation designed for both privacy and community living. Each classic room features a comfortable 3/4 bed, a desk, and a private bathroom, while a shared kitchen with 3-5 students includes essential appliances and a communal dining area. The residence provides 24-hour security, CCTV, and concierge services, with all utility bills included for a hassle-free stay. On-site amenities such as laundry facilities, bike racks, a communal lounge, and free Wi-Fi ensure a comfortable and convenient living experience.

Rooms

Small double bed with en-suite bath. Free Wi-Fi, small double beds, storage space, desk and chair.

The kitchen includes the following: Breakfast bar, Fridge Freezer, Cooking Hob, Dustpan and Brush, Iron/ironing board, Kitchen bin, Microwave, Mop and bucket, Noticeboard, Oven, Sofa, Stools, Television, Vacuum cleaner.

Common Areas

Bike racks, Communal Dining Room, Communal Kitchen, Communal Lounge, Free-Wi-Fi, Wheelchair accessible

Laundry

There 6 apps-operated washing machines / dryers on site at a cost of £3.30 per wash and £1.90 per dry. The students need to buy washing liquid. Full-time housekeeper on site that maintains standards in communal areas. No cleaning carried out within flats.

Arrival procedures

Please send flight details or an estimated arrival time when booking accommodation or as soon as possible once you know it. On arrival, come to the main reception, and the residence staff will give you your card and show you to your room.

Airport pickup

If you have booked an EC airport transfer, on arrival at Manchester Airport please turn on your phone and your driver will be ready to contact you either by phone or message. Your driver will direct you to the place to meet outside the arrivals lounge. Should you have any delays or cancellations on your journey, our driver will be monitoring your flight to ensure they are ready to greet you at the correct time. If you have problems and cannot contact your driver then please call the EC emergency number on +44 (0) 7474 460908 (from the information desk or a mobile phone).

Other ways to get to your residence

Taxi – 20 minutes, Train from airport Bus n.50 – 40 minutes

Arrival and Departure

Arrival day: Saturday (Sunday arrival is possible on request)

Check-in: 3 pm

Late check in is allowed.

The property is manned 24/7 and students can check in at anytime.

Although the property has static staff, the team member may be away from the desk at various points when conducting patrols etc. If a student arrives to check in, they should proceed to Reception. If the Reception is closed, then they should call the numbers above, to alert a staff member.

Departure day: Saturday

Check-out: 11:00 am.

Late checkout is not allowed.



Address

Brook Hall
1281 Upper Brook St,
Manchester M13 0FZUK.

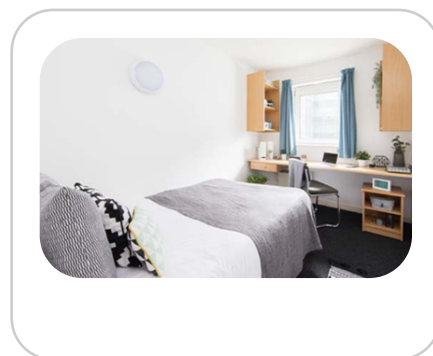
Emergency phone number: [+44 3003038642](tel:+443003038642)

Journey to school

One minute walk to the bus stop, number 50 bus (13 minutes 7 stops) 6 minute walk to school. 19 minutes in total.

House Rules

- Students must be 18 + to choose this residence
- Mixed Gender: Male and female students share common areas and facilities, but bedrooms are single gender.
- The students cannot give their key/fob out to anyone else to use. Guests must be escorted by the student who has been allocated a room at Brook Hall. This is to ensure the safety and security of our students and staff.
- Overnight guest are not allowed.
- Smoking is not permitted anywhere in the residence.
- Students arriving in EC accommodation between 22.00 and 08.00 may be asked to book alternative accommodation for their first night. This is to ensure the students' safety on arrival.
- While we promote and support diversity, we cannot guarantee a language mix. However, we always encourage students to use English to communicate and be respectful and inclusive of others. .



Resident belongings

- EC provides a clean living space for all students and expects a basic level of respect from all students. For example, if something is dropped, pick it up; do not leave clothes and belongings on the floor; place rubbish and leftovers in a garbage bag.
- **Students are required** to follow [EC Student Code of Conduct](#), failure to do so can result in termination of the accommodation.

For more accommodation terms and conditions please refer to [EC accommodation policy](#).

Cancellations

Cancellation prior to arrival

Students cancelling or postponing within 14 days of arrival date, for reasons other than visa denial, will be charged a one-week accommodation fee at the standard accommodation rate and the accommodation placement fee.

Cancellation after arrival

Students leaving their accommodation must give notice in writing 4 weeks prior to termination. After deducting the price of accommodation used, including the required notice period, charged at standard accommodation rates, students will be refunded the remaining accommodation costs. If the 4-week notice period is not provided a cancellation fee equal to 4 weeks of the accommodation cost will apply.

