



# North Laine Residence



## Enjoy Brighton in the centre of the city.

### Comfort, convenience and community: Experience modern student living with EC

Close to the beach and surrounded by shops and cafes, this modern student residence is within easy reach of everything you need. Enjoy bright and spacious accommodation at this stylish student residence right in the heart of vibrant Brighton.

### Your neighbourhood

This fashionable city by the sea is known for its iconic pebble beaches and famously creative community. It also enjoys a superb location just an hour from London and close to the stunning scenery of the South Downs National Park.

### Your Accommodation

#### Room Options

The accommodation offers two types of rooms: single rooms in a shared flat and private studios.

No cleaning of single rooms or studios is provided during your stay.

Bed linen is included; towels are not; please bring your own towel.

#### Common Areas

TV in the communal kitchen. Up to 8 students may share one flat including shared kitchen facilities.

Weekly cleans of cluster kitchens provided. Communal areas are cleaned daily.

#### Room type

Single room

#### Bathroom

En-suite (Shower)

#### Board status

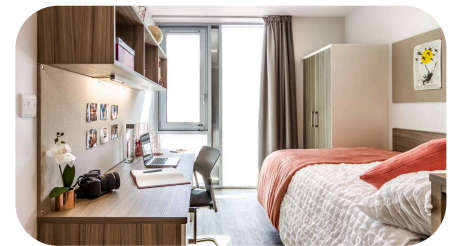
Self-catering

#### Available

27/06/2026 - 22/08/2026

#### Arrival and departure

Saturday/Sunday



### Key Features

Wheelchair Accessible

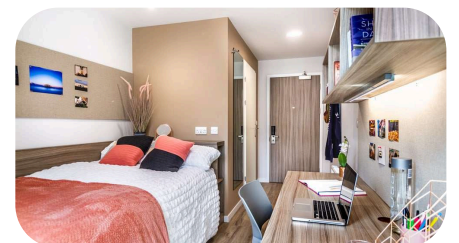
Cinema Room

BIKE RACKS

24/7 security & CCTV

games room

Laundry FACILITIES



## Room Furnishings

Each of our single rooms comes with a small double bed, loads of storage & workspace and your own ensuite shower room. Rooms have 13.5sqm of floor space. Plus, you and your 7 flatmates will have access to the shared kitchen. Our studios come with a small double bed, loads of workspace & storage, ensuite shower room and your own mini-kitchen. Plus, there is 17.5sqm of floor space.

## Laundry

There are 6 washing machines / 6 dryers available at a cost of £3.80 to wash and £2.30 to dry.

Luggage drop-off service not available.

## House Rules

- Must be 18+ to choose this residence
- Mixed Gender: Male and female students share common areas and facilities, but bedrooms are single gender
- Overnight guests are not allowed.
- Smoking is not permitted anywhere in the residence.
- While we promote and support diversity, we cannot guarantee language mix. However, we always encourage students to use English to communicate, be respectful and inclusive of others.
- EC provides a clean living space for all students and expects a basic level of respect from all students. For example, if something is dropped, pick it up; do not leave clothes and belongings on the floor; place rubbish and leftovers in a garbage bag.
- Students are required to follow [EC Student Code of Conduct](#), failure to do so can result in termination of the accommodation.

For more accommodation terms and conditions please refer to [EC accommodation policy](#).

## Cancellations

### Cancellation prior to arrival

Students cancelling or postponing within 14 days of arrival date, for reasons other than visa denial, will be charged a one-week accommodation fee at the standard accommodation rate and the accommodation placement fee.

### Cancellation after arrival

Students leaving their accommodation must give notice in writing 4 weeks prior to termination. After deducting the price of accommodation used, including the required notice period, charged at standard accommodation rates, students will be refunded the remaining accommodation costs. If the 4-week notice period is not provided a cancellation fee equal to 4 weeks of the accommodation cost will apply.

[Terms & Conditions](#)



## Arrival and Departure

**Arrival day:** Saturday/Sunday

**Check-in:** after 3 pm

**Departure day:** Saturday

**Check-out:** 10 am

Late check out is not possible.

## Address

North Laine

5 Market Square, Circus Street, BN2 9AS, Brighton

**Phone number:** [+44 0127 305 9088](tel:+4401273059088)

**Emergency number:** [+44 078 310 00693](tel:+4407831000693)

## Journey to school

9 minutes walking distance.

