



# iQ Student Residence



## iQ Bristol is convenient and comfortable student living in the heart of Bristol.

### Comfort and Convenience Under One Roof.

Just a 15-minute walk from the University of Bristol and a short bus ride from the University of the West of England, this modern residence has ensuite rooms and communal areas suitable for socialising and studying. With easy access to the city's entertainment, waterfront, and transportation hubs, iQ Bristol ensures you're always close to the action!

### Your neighborhood

Located just 15 minutes from the University of Bristol, iQ Bristol offers well-equipped student accommodation right in the centre of this creative city. Only 4 minutes from BIMM, and a short bus ride from the University of the West of England. You will be a short walk from the waterfront quarter, Bristol Temple Meads train station, and all the entertainment in the city centre.

### Your Accommodation

iQ Bristol provides a modern purpose-built student accommodation for our EC students with well-equipped single ensuite rooms and a wide range of social and study spaces right in the centre of this creative city.

#### Room Options

Rooms include a private ensuite shower and toilet, a small double bed, a study desk and chair, and a wardrobe and drawers.

#### Laundry

Common areas are cleaned weekly. Optional room cleaning costs £20 (includes bed linen change) and can be booked at school reception. There are 6 app-operated washing machines in the building, each costing £3.20, and 6 dryer units available for £1.50. Students need to buy their washing liquid.

#### Room type

Single room in a shared flat

#### Bathroom

En-suite

#### Board status

Self-catering

#### Available

Year-round

#### Arrival and departure

Saturday/Saturday



### Key Features

Gym  
Dining Room  
tv  
Heating  
24/7 security & CCTV  
games room  
Communal Lounge

## Kitchen

Crockery/cutlery, pots, pans and utensils are provided.

## Luggage

Luggage drop-off is allowed.

## Arrival procedures

Please send flight details or an estimated arrival time when booking accommodation or as soon as possible once you know it. On arrival, come to the main reception, and the residence staff will give you your card and show you to your room. On departure, please leave your room tidy and return your keys at reception in the lobby.

## Airport pickup

If you have booked accommodation with EC, you must arrive at the airport between 08:00 and 20:00. Late/early arrivals may be asked to book alternative accommodation. Please provide your flight number, arrival time, terminal and airport of origin – minimum 2 weeks in advance. You will meet an EC transportation representative holding a sign with your name at the arrivals. If after 10 minutes you cannot see the EC representative, call the EC emergency phone +44 77 1356 1436. If you missed your flight or your flight is delayed, you should notify EC by calling the emergency phone if out of office hours, +44 77 1356 1436 (from the information desk or a mobile phone) to rearrange your transfer time and avoid additional cost.

If Airport Pickup is not requested, you can get to the residence by train.

## House Rules

- Students must be 18 + to choose this accommodation
- Mixed Gender: Male and female students share common areas and facilities, but bedrooms are single gender
- Guests are allowed, but can not stay overnight
- A deposit is not requested
- Smoking is not permitted
- Students arriving in EC accommodation between 22.00 and 08.00 may be asked to book alternative accommodation for their first night. This is to ensure the students' safety on arrival.
- While we promote and support diversity, we cannot guarantee a language mix. However, we always encourage students to use English to communicate and be respectful and inclusive of others.
- EC provides a clean living space for all students and expects a basic level of respect from them. For example, if something is dropped, pick it up; do not leave clothes and belongings on the floor; and place rubbish and leftovers in a garbage bag.
- EC provides a clean living space for all students and expects a basic level of respect from all students. For example, if something is dropped, pick it up; do not leave clothes and belongings on the floor; place rubbish and leftovers in a garbage bag.
- **Students are required** to follow [EC Student Code of Conduct](#), failure to do so can result in termination of the accommodation.

For more accommodation terms and conditions please refer to [EC accommodation policy](#).

## Arrival and Departure

**Arrival day:** Saturday (Sunday arrival is possible on request)

**Check-in:** from 13:00

Late check is allowed. The residence has staff available for check-in 24/7.

**Departure day:** Saturday

**Check-out:** 10:00 am.

Late check-out is not possible

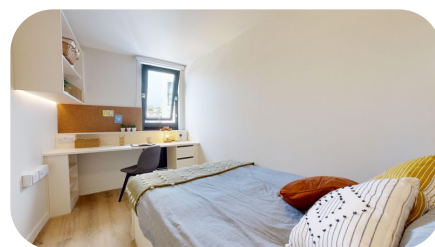
## Address

iQ Bristol  
Marlborough Street  
Bristol BS1 3EQ  
United Kingdom

**Phone number:** [+\(0044\) 786 0753 515](tel:+447713561436)

## Journey to school

iQ Bristol is only a 2-minute walk from the main bus station and a 15-minute' walk from EC Bristol.



## Cancellations

### Cancellation prior to arrival

Students cancelling or postponing 14 days or less prior to their accommodation dates will be charged a two-week accommodation fee at the rate quoted in the price list for the accommodation booked and the accommodation placement fee.

### Cancellation after arrival

Students leaving their accommodation must give notice in writing 4 weeks prior to termination. If the 4-week notice period is not provided a cancellation fee equal to 4 weeks of the accommodation cost will apply. After deducting the price of accommodation used at the rate quoted in the price list, including the required notice period charged at the same rate, students will be refunded the remaining accommodation costs.

[Terms & Conditions](#)

