



# Santa Monica Downtown Shared Apartment



## Accommodation in trendy Santa Monica

### Comfort, convenience and community: Experience modern student living with EC

Enjoy modern living and a relaxed beach lifestyle in our Santa Monica Downtown Shared Apartments. These comfortable apartments are near the Pacific Ocean and the famous Santa Monica Pier. With shared twin rooms, a spacious communal kitchen and a lounge, it is the ideal place to connect with others and practice your English. Each apartment has free Wi-Fi, laundry facilities and a bi-weekly cleaning service. Here, you can live easily and experience the heart of Santa Monica just outside your door.

### Your neighbourhood

This location offers all the convenience of modern urban living and is only a short walk from the Pacific Ocean and famous landmarks like Santa Monica's historic pier and the 3rd Street

Promenade. Local amenities include restaurants, cafes, bars, gyms, a large library, metro station, parks, and numerous shops, including the Frank Gehry-designed mall, Santa Monica Place, and the entertainment of the Santa Monica Pier.

### Your Accommodation

These modern, well-designed apartments are within walking distance of the EC Los Angeles school, as well as the entertainment and nightlife of Santa Monica. Each two-bedroom apartment features modern appliances and designer finishes, and each bedroom can be booked for private use (single occupancy) or shared (twin occupancy). The open-plan kitchen and living area typically includes a balcony and large patio doors. Each apartment also includes complimentary laundry facilities, a feature not commonly available in many apartments in this area.

#### Room type

Single / Twin Room

#### Number of bedrooms

2

#### Bathroom

Private / Shared

#### Board status

Self-catering

#### Available

Year-round

#### Arrival and departure

Saturday / Saturday



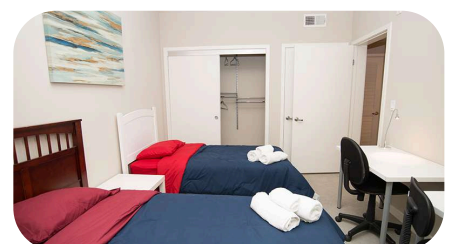
### Key Features

Communal Lounge

Communal Kitchen

Wi-Fi

Laundry Facilities



## Room Options

Single room with private bathroom or twin with shared bathroom

## Miscellaneous

Towels and linens are provided.

Students are responsible for cleaning and changing their towels and linens when necessary.

TV with cable TV/Netflix in each apartment.

## Cleaning & Laundry

Cleaning service is provided bi-weekly for all common areas and bedrooms. A washer and dryer are provided in the apartment. Students must buy their own detergent.

House Rules

## Arrival procedures

### House Rules

- Students must be 18 + to choose this accommodation
- Mixed Gender Apartment: Male and female students share common areas and facilities, but bedrooms are single gender. Maximum Occupants are 4 students per apartment, 2 bathrooms per apartment.
- Minimum stay 4 week.
- Students must pay a \$350 damage deposit at check-in. Payment can be made by credit card.
- Deposits will be returned to the same Credit Card. Deposit fees will be returned less damages, payment fees, penalties, or any other relevant charges on the day of departure.
- Due to health and safety regulations, bedroom doors in shared accommodation do not have locks.
- Smoking is not permitted in the accommodation
- Students arriving in EC accommodation between 22.00 and 08.00 may be asked to book alternative accommodation for their first night. This is to ensure the students' safety on arrival.
- While we promote and support diversity, we cannot guarantee a language mix. However, we always encourage students to use English to communicate and be respectful and inclusive of others.

### Resident belongings

- EC provides a clean living space for all students and expects a basic level of respect from all students. For example, if something is dropped, pick it up; do not leave clothes and belongings on the floor; place rubbish and leftovers in a garbage bag.
- **Students are required** to follow [EC Student Code of Conduct](#), failure to do so can result in termination of the accommodation.

For more accommodation terms and conditions please refer to [EC accommodation policy](#).

EC transportation representative will be holding an EC Los Angeles sign located right after you pick up your luggage(s). Other ways to get to your residence: Airport Pick-up is not requested; student will need to take an Uber/Lyft or Taxi to the residence.

## Arrival and Departure

**Arrival Day:** Saturday only

**Check-in:** 2pm until 10 pm

Arrivals must outside these days/times be requested one week in advance and are subject to availability.

Last-minute arrival on Saturday after check-in time or on Sunday without prior arrangement is not possible as no security or reception staff work at these locations.

Please call on +1 310 451 7657 one hour prior to your arrival time to arrange check-in. Check-in is from 2:00 pm to 10:00 pm.

Please ensure you arrive on a Saturday within the permitted time range for arrivals and supply EC with your flight details no later than the week of your arrival. Otherwise, we can not guarantee you will be able to check-in to the apartment in a timely manner. If there are any issues please call the emergency phone number +1 424 428 8808.

**Departure day:** Saturday

**Check Out:** 11:00 am and 12:00 pm

Early check-out is subject to availability and if possible, can be arranged in school one week in advance of departure.

## Address

Apartments are located between the 5th and 9th streets. Central meeting point for all check-ins: 1531 6th Street, Santa Monica, CA 90401. The exact apartment will be confirmed on arrival.

**Phone number:** [+1 310-451-7657](tel:+13104517657)

**Emergency number:** [+1 424 428 8808](tel:+14244288808)

### Journey to school

10 – 15-minute walk.

## Cancellations

### Cancellation prior to arrival

Students cancelling or postponing 14 days or less prior to their accommodation dates will be charged a two-week accommodation fee at the rate quoted in the price list for the accommodation booked and the accommodation placement fee.

### Cancellation after arrival

Students leaving their accommodation must give notice in writing 4 weeks prior to termination. If the 4-week notice period is not provided a cancellation fee equal to 4 weeks of the accommodation cost will apply. After deducting the price of accommodation used at the rate quoted in the price list, including the required notice period charged at the same rate, students will be refunded the remaining accommodation costs.

[Terms & Conditions](#)

