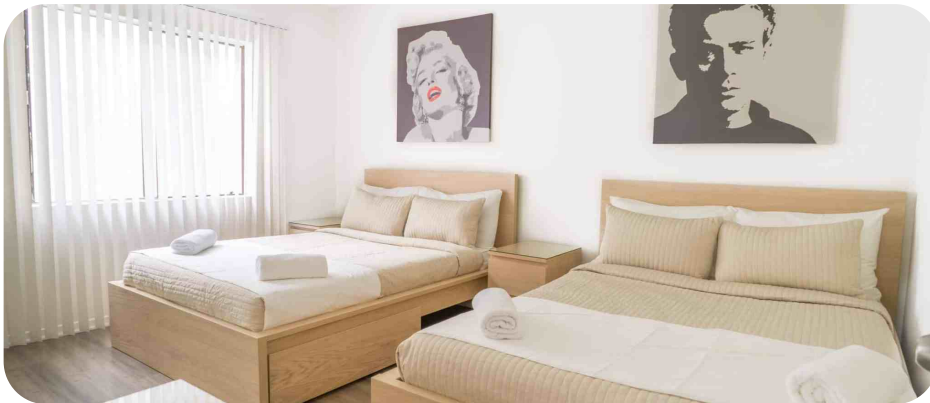




Westwood Apartments



Comfortable Living in the Heart of Westwood.

Stay at Westwood Apartments and enjoy a convenient and well-connected home. Choose from single or twin rooms with access to a shared kitchen and bathroom.

Located near UCLA and the popular Westwood Village, these apartments put you close to cafes, shops, and bus routes to your school. You'll have everything you need for a comfortable stay with free Wi-Fi, a fully equipped kitchen, and laundry facilities.

Your neighbourhood

These cosy apartments are just a short distance from all the amenities of Westwood Village, one of LA's most walkable and popular neighbourhoods.

Located near the UCLA campus, you will enjoy all the advantages of modern urban living, from trendy cafes to convenient supermarkets.

Your Accommodation

Students will have a fully supplied kitchen with utensils, such as spoons, bowls, knives, forks, plates, cups, pans and pots. The standard economy single room is typically a smaller room than the comfort single room and may have been a living room space that has been converted into a split bedroom.

Note: These apartments are co-living apartments, with just a shared kitchen.

Building facilities

Cleaning & Laundry

Staff will clean the common rooms, restroom, and kitchen bi-weekly at no additional charge. Students are responsible for keeping their own rooms clean. Each apartment has one washing machine and one dryer available for free use. However, students must purchase their own laundry detergent. Utility bills are included.

Room Furnishings

Heating, Bed Linen provided, Towels provided, Free Wi-Fi & TV.

Room type

Single / Twin

Bathroom

Shared

Board status

Self-catering

Available

Year-round

Arrival and departure

Saturday/Saturday



Key Features

TV
Free Wi-Fi
Communal Kitchen
Dining Room
Cleaning Services
Laundry Room



Kitchen Facilities

The kitchen is fully equipped with utensils, including spoons, forks, knives, pots, pans, plates, and bowls. For any maintenance requests, students should activate their online portal and submit requests through AppFolio to contact the housing team directly.

Arrival procedures

Airport pickup

Please send flight details or an estimated arrival time when booking accommodation or as soon as possible once you know it. On arrival, come to the main reception, and the residence staff will give you your card and show you to your room. On departure, please leave your room tidy and return your keys at reception in the lobby.

An EC transportation representative will be holding an "EC Los Angeles" sign directly after the luggage pick-up area.

Other ways to get to your residence

If airport pick-up is not requested, students will need to take an Uber, Lyft, or taxi to the residence.

House Rules

- Students need to be 18 + to choose this accommodation
- Apartments are mixed gender. Male and female students share common areas and facilities, but bedrooms are single gender.
- Guests are allowed but cannot stay overnight.
- Students arriving in EC accommodation between 22.00 and 08.00 may be asked to book alternative accommodation for their first night. This is to ensure the students' safety on arrival.
- Smoking is not permitted in the accommodation.
- While we promote and support diversity, we cannot guarantee a language mix. However, we always encourage students to use English to communicate and be respectful and inclusive of others.

EC provides a clean-living space for all students and expects a basic level of respect from all students. For example, if something is dropped, pick it up; do not leave clothes and belongings on the floor; place rubbish and leftovers in a garbage bag. Students are required to follow the [EC Student Code of Conduct](#); failure to do so can result in termination of the accommodation.

Arrival and Departure

Arrival day: Saturday (Sunday arrival is possible on request)

Check-in: 5:00 PM to 10:00 PM

Early check-in is not allowed.

Late check-in is not allowed.

Departure day: Saturday

Check-out: 11:00 am.

Late check-out is not allowed.



Address

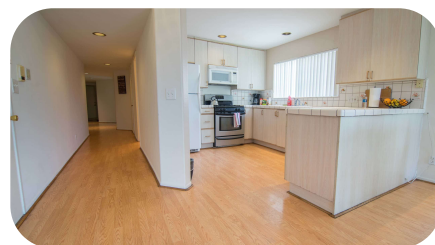
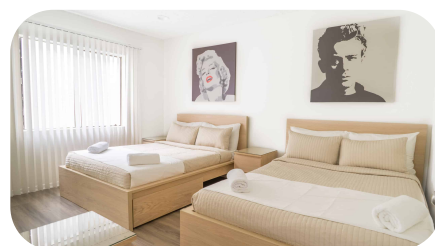
To be provided 2 weeks before arrival.

Phone number: [+1 424 428 8808](tel:+14244288808)

Journey to school

By bus: 35 minutes to 45 minutes

Take either the Metro bus #720 from Wilshire Blvd to Santa Monica or you can take the Metro #704 bus along the Westwood Blvd to Santa Monica



Cancellations

Cancellation prior to arrival

Students cancelling or postponing their accommodation 14 days or less before their accommodation dates will be charged a two-week accommodation fee at the rate quoted in the price list for the accommodation booked and the accommodation placement fee.

Cancellation after arrival

Students leaving their accommodation must give notice in writing four weeks before termination. If the 4-week notice period is not provided, a cancellation fee equal to 4 weeks of accommodation costs will apply. After deducting the accommodation price used at the rate quoted in the price list, including the required notice period charged at the same rate, students will be refunded the remaining accommodation costs.

