



# Los Angeles Homestay



## Immerse yourself in local culture and hospitality with a selected host family.

Experience the true diversity of LA by staying with a local host family. Los Angeles County is full of vibrant neighbourhoods, and living with a family gives you a unique opportunity to immerse yourself in American culture. You'll practice your English in a comfortable, supportive home environment while experiencing daily life in LA. Whether learning about the local lifestyle, enjoying new foods, or simply participating in family routines, a homestay in LA is a great way to make the most of your time in the city.

### Your Neighbourhood

Los Angeles County is sprawling and divided into various areas that are full of character and personality. The cities of Los Angeles County are vibrant and culturally diverse. Our host families reflect the diversity of Los Angeles and also include single people, couples, and single-parent families. All families are fluent in English and eager to share the diversity of Los Angeles with international visitors.

### Your Accommodation

Staying with a local family is a great way to immerse yourself in American culture. This interaction helps students communicate and practice their English in a more relaxed environment while also exposing them to new experiences—be it lifestyle, local food, or simple daily routines.

### Housing

Homes vary in type. Some are apartments, some are town homes and some are single-family homes.

#### Room type

Single (Twin room only available for two students booking together)

#### Bathroom

Shared

#### Board status

Bed & Breakfast or Half Board

#### Available

Year-round

#### Arrival and departure

Saturday/Saturday



### Arrival and Departure

**Available:** Year-round

**Arrival day:** Saturday

**Departure day:** Saturday



### Contact

Emergency number: [+1 858 449 3758](tel:+18584493758)

## Room Options

Twin rooms are only available for two students booking together.

Students are placed in a single or twin room. Each room is furnished with a bed, dresser, and closet. Some rooms have TVs and other amenities. Rooms and living areas must be kept neat. Students also have access to a shared bathroom.

## Laundry

The host family provides bed linen and towels. Some Los Angeles families do not have a washing machine in their home and use the services of a laundromat—in this case, laundry facilities can cost anywhere from \$3-\$5 per wash/ dry. The individual host family profile will note whether there will be a charge for laundry costs. In cases where families have a washing machine, students may use the laundry facilities, although this remains at the discretion of each family.

## WiFi

Internet access is included, and phone usage is restricted to incoming calls only.

## Arrangement and Transport

### Journey to school

Los Angeles' major transport system is run by LA Metro, which operates buses and trains throughout Los Angeles County. Santa Monica Bus Lines operates the Big Blue Bus, which offers service to and from Santa Monica. Most EC students will use this service. Please check the website: The Big Blue Bus for adult fares.

### Host Family Locations

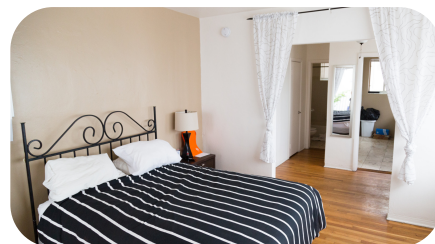
Host families are located about 30 – 60 minutes by public transport from the school. Times are approximate.

### House Rules

- No smoking is permitted inside homes.
- Families might have pets.
- Students might be given a house key, though alternative arrangements might be sought.
- Bedrooms may or may not have locking doors.
- Cooking facilities are not available for student use. However, the room-only option provides additional flexibility for students who do not want to be restricted by mealtimes.
- Host families can host up to 2 students from the same country at the same time. During high season, they can host 3 students from the same country at the same time.
- Students arriving in EC accommodation between 22.00 and 08.00 may be asked to book alternative accommodation for their first night. This is to ensure the students' safety on arrival.
- All under-18 bookings should be aware that, due to Local Police Regulations, there is a 10 pm curfew for all under-18s in all areas EC LA has host families.
- Students are required to follow the [EC Student Code of Conduct](#); failure to do so can result in termination of the accommodation.

For more accommodation terms and conditions please refer to [EC accommodation policy](#).

### Cancellations



**Cancellation prior to arrival**

Students cancelling or postponing fewer than 14 days before arrival will be charged a two-week accommodation fee at the standard accommodation rate and the accommodation placement fee.

**Cancellation after arrival**

Students leaving their accommodation must give notice in writing four (4) weeks prior to termination. After deducting the price of accommodation used, including the required notice period charged at standard accommodation rates, students will be refunded the remaining accommodation costs. If the four-week notice period is not provided, a cancellation fee equal to four (4) weeks of the accommodation cost will apply.

