



# Student Apartment Studio



## Make your Malta accommodation a private retreat

### Privacy, comfort and convenience: Enjoy modern student living with EC

Experience Malta's vibrant lifestyle from the comfort of one of our Student Apartment Studios, designed for EC students seeking privacy, independence and comfort. Nestled in one of Malta's dynamic towns, Sliema, St Julian's, or Swieqi, our studios are all just a 30-minute walk from school, in the heart of the island's social and cultural scene. From lively promenades and sandy beaches to trendy cafes and entertainment venues, everything you need is close by, so you can fully immerse yourself in Malta's charm.

Tailored to students aged 30+ or those preferring exclusive use, our studios feature modern décor, fully equipped kitchens, and comfortable living spaces perfect for relaxing or studying. All our accommodations combine convenience with a sense of home, making it the ideal choice for students looking to balance independence with connection. Your Malta adventure begins here!

### Your neighborhood

Apartments are generally located in Sliema, St Julian's and Swieqi, three of the liveliest towns in Malta. These areas are home to much of Malta's expat community because of their youthful atmosphere and a good selection of shops, restaurants and entertainment venues. Students choosing to stay here will be well-connected to Malta's social, cultural and tourism scenes. Beaches are never too far away nor is the long seaside promenade that's buzzing with people day and night. Apartments are at a maximum distance of 30 minutes on foot or quicker by bus.

#### Room type

Studio

#### Bathroom

En-suite

#### Board status

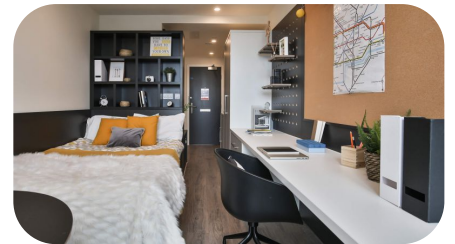
Self-catering

#### Available

Year-round

#### Arrival and departure

Saturday/Sunday



### Key Features

Lift

Kitchen

air conditioning

Study area

Laundry Facilities



## Your Accommodation

Your EC home is your place to relax and recharge, so it is important that you feel comfortable. That is why we have accommodation options to suit your tastes and needs. Our Student Apartment Studio accommodations are recommended for 30+ students and for those who want to have an exclusive use of the apartment.

All the apartments are located up to 30 minutes walking distance from school. The apartments are decorated in a modern style, offering a fully equipped kitchen including an oven, hob, microwave, fridge/freezer, toaster and kettle, with a living and a dining area. Air conditioning is available in the bedroom. The maximum capacity of our apartments is two (2) students per apartment. At least one of the residents must attend an English course at EC Malta.

### Room Options

Studio (max 2) with en-suite bath. Rooms sizes vary.

### Apartment Furnishings

Fully equipped kitchen, living area, dining area and modern décor

### Room Furnishings

Bed, nightstand, chest of drawers, closet, bed linen and towels, hair dryer, fan, iron and air conditioning available

### Laundry

Laundry facilities available.

## Arrival procedures

### Airport pickup

Upon arrival and luggage pick-up, you will enter the Malta Airport Arrival area, where you should look for your taxi driver who will be holding a white paper with a big orange EC logo. The driver will ask you for your name and surname. The drivers will always try to be on time, however, if for reasons beyond their control, a delay occurs, please, wait for 10 mins before you call the EC Emergency number on +356 99467078. Please note that our cars have space for 1 cabin luggage and 1 large suitcase per person. You will then be taken to your accommodation. If you arrive before 2pm please contact the school for further details. Please note that EC does not accept any liability for your belongings.

Arrival transfer is included free of charge when booking course and accommodation with EC.

### Other ways to get to your residence

If, despite free airport transfer offered by EC, you decide to arrange your own transfer, please note that you must contact the school during office hours (Monday to Thursday before the arrival date from 9am to 4pm) to arrange key collection from school reception.

## Arrival and Departure

**Arrival day:** Saturday/Sunday

**Check-in:** 2 pm

Early check-in is not allowed. Late check-in is allowed (please see **Arrival procedure**).

**Departure day:** Saturday/Sunday

**Check-out:** 10:00 am.

Late check-out is not possible

**Departure procedure**

Check-out from the apartment is 10am. Please remember to leave your apartment and bedroom key as indicated, otherwise lost key charges may apply.

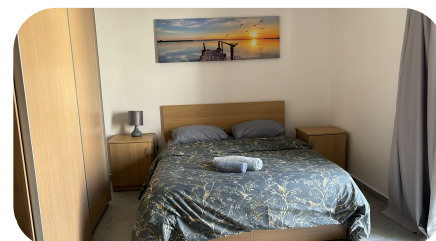
## Address

Apartments are generally located in the towns of Sliema, St Julian's and Swieqi.

**Phone number:** [+356 2379 0555](tel:+35623790555)

### Journey to school

By bus or on foot—maximum of a 30-minute walk to school.



## House Rules

- Students need to be 18+ to choose this accommodation. Under 18s are only permitted to stay in this accommodation option if at least one of the parents stays with the minor for the full length of their stay.
- Every resident must sign a Shared Apartment Agreement before they can receive the key of the apartment or as otherwise instructed. The Agreement informs the residents that they are responsible for any damages and it explains the other rules of the accommodation (some of them listed below), The document is available on request before confirmation of booking. No Deposit needed.
- Guests are not permitted without written permission from the Accommodation Office.
- Smoking is not permitted in any part of the apartment.
- Garbage and recycling collection times must be followed, or local council fines apply. This info is displayed in each apartment.
- EC provides a clean living space for all students and expects a basic level of respect from all students. For example, if something is dropped, pick it up; do not leave clothes and belongings on the floor; place rubbish and leftovers in a garbage bag.
- **Students are required** to follow [EC Student Code of Conduct](#), failure to do so can result in termination of the accommodation.

For more accommodation terms and conditions please refer to [EC accommodation policy](#).

## Cancellations

### Cancellation prior to arrival

Students cancelling or postponing 14 days or less prior to their accommodation dates will be charged a two-week accommodation fee at the rate quoted in the price list for the accommodation booked and the accommodation placement fee.

### Cancellation after arrival

Students leaving their accommodation must give notice in writing 4 weeks prior to termination. If the 4-week notice period is not provided a cancellation fee equal to 4 weeks of the accommodation cost will apply. After deducting the price of accommodation used at the rate quoted in the price list, including the required notice period charged at the same rate, students will be refunded the remaining accommodation costs.

