



# Anglia House



## Modern Summer Residence on Newmarket Road

**Cosy living, effortless lifestyle and a friendly community – experience modern student living with EC!**

Anglia House is located just outside the city centre, on Newmarket Road. Well-connected by public transport, it provides a convenient base for students. EC Cambridge is approximately 1.5 miles away, taking around 25 minutes on foot, 8 minutes by bike, or 15 minutes by bus.

### Your neighborhood

The neighbourhood is historical and a short walk away from the Beehive Shopping Centre. The area offers access to local shops, cafes, and green spaces, with the River Cam and Stourbridge Common nearby.

### Your Accommodation

Anglia House residence is a popular student accommodation in Cambridge. Students will enjoy an on-site gym and comfortable communal areas with games and 24/7 security.

### Room type

Single Ensuite rooms

### Bathroom

En-suite shower

### Board status

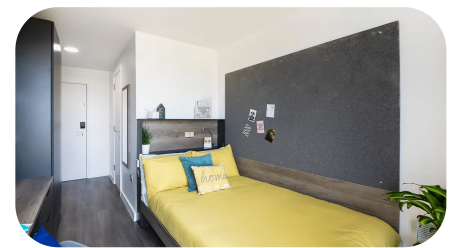
Self-catering

### Available

27/06/2026 – 15/08/2026

### Arrival and departure

Saturday/Saturday



### Key Features

Heating  
Fitness Center  
Multimedia Room  
24-Hour Security and CCTV  
Lift  
Garden & Picnic areas  
games room  
Laundry room

## Room Options

The bedrooms include a small double bed with a desk and plenty of storage space. All bedrooms are ensuite and the kitchen will be shared with other EC students.

## Common Areas

Communal Dining Room, Communal Kitchen, Communal Lounge, Fitness Center. Games Room, Garden, Multimedia Room, Picnic areas.

## Communal Kitchen

Kitchen utensils are provided, such as plates, cutlery, pots and pans.

Oven and microwave are available.

## Laundry

Cleaning service is provided once a week for common areas. Room cleaning is available at an additional cost of £20.

There are 3 app operated washing machines/dryers.

## Arrival procedures

Please send flight details or an estimated arrival time when booking accommodation or as soon as possible once you know it.

## Airport pickup

If you have booked accommodation with EC you must arrive at the airport between 08:00 and 20:00. Late/early arrivals may be asked to book alternative accommodation

Please provide your flight number, arrival time, terminal and airport of origin – minimum 2 weeks in advance. You will meet an EC transportation representative holding sign with the EC logo and your name. They will be waiting for you at Arrivals. If after 10 minutes you cannot see the EC representative, just call +44 (0)7342037743 (from the information desk or a mobile phone). (Useful phrase to use: Hi, My name is (Maria Angeli). I am from (Italy). My student number is (123456). I cannot find my EC representative. I am at the information desk.)

## Arrival and Departure

**Arrival day:** Saturday (Sunday arrival is possible on request)

**Check-in:** 3 pm

Early check-in is not allowed

Staff at the residence will help students to check-in.

**Departure day:** Saturday

**Check-out:** 10:00 am.

Late check-out is not possible



## Address

217 Newmarket Road, Cambridge  
CB5 8AY

United Kingdom

**Phone number:** [+44 \(0\) 122 361 2135](tel:+44203612135)

## Journey to school

25-minute walk to EC Cambridge or a 15-minute bus journey.

## House Rules

- Students must be 18 + to choose this residence
- Mixed Gender: Male and female students share common areas and facilities, but bedrooms are single gender.
- Overnight guests and visitors are allowed and can stay for a maximum of 3 nights every 4 weeks.
- Smoking is only permitted in the designated smoking area.
- Students arriving in EC accommodation between 22.00 and 08.00 may be asked to book alternative accommodation for their first night. This is to ensure the students' safety on arrival.
- While we promote and support diversity, we cannot guarantee a language mix. However, we always encourage students to use English to communicate and be respectful and inclusive of others.

### Resident belongings

- EC provides a clean living space for all students and expects a basic level of respect from all students. For example, if something is dropped, pick it up; do not leave clothes and belongings on the floor; place rubbish and leftovers in a garbage bag.
- **Students are required** to follow [EC Student Code of Conduct](#), failure to do so can result in termination of the accommodation.

For more accommodation terms and conditions please refer to [EC accommodation policy](#).

## Cancellations

### Cancellation prior to arrival

Students cancelling or postponing within 14 days of arrival date, for reasons other than visa denial, will be charged a one-week accommodation fee at the standard accommodation rate and the accommodation placement fee.

### Cancellation after arrival

Students leaving their accommodation must give notice in writing 4 weeks prior to termination. After deducting the price of accommodation used, including the required notice period, charged at standard accommodation rates, students will be refunded the remaining accommodation costs. If the 4-week notice period is not provided a cancellation fee equal to 4 weeks of the accommodation cost will apply.

[Terms & Conditions](#)

